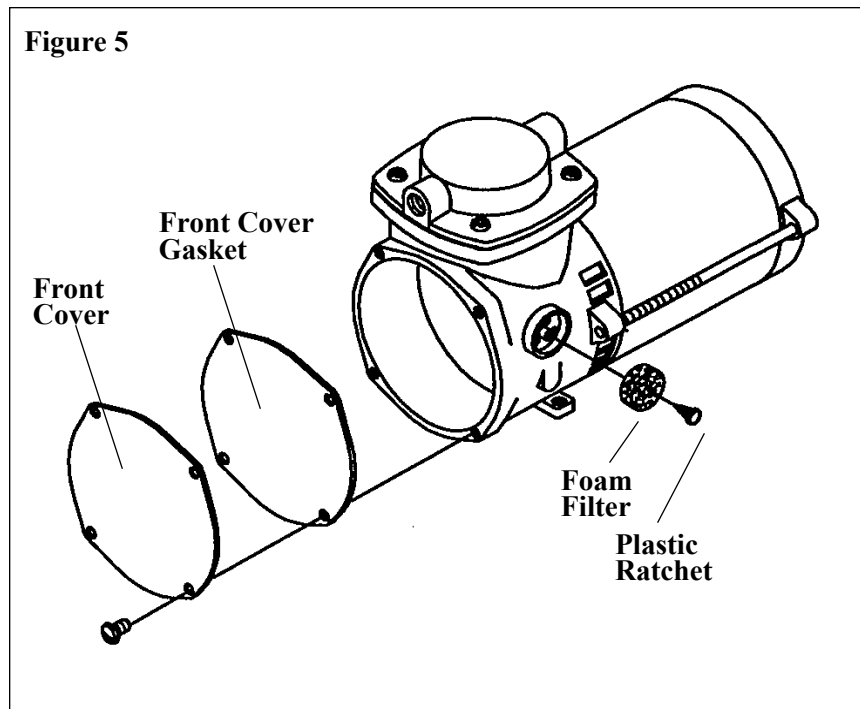


STEP 17. Assemble the new front cover gasket and front cover to the back of the compressor.

STEP 18. Assemble the new filter to the side of the compressor and reattach the plastic ratchet.

Figure 5



THOMAS
A Gardner Denver Product

3524 Washington Avenue
Sheboygan, Wisconsin 53081 USA
(920) 457-4831 www.gd-thomas.com

MODEL SK405MAJ

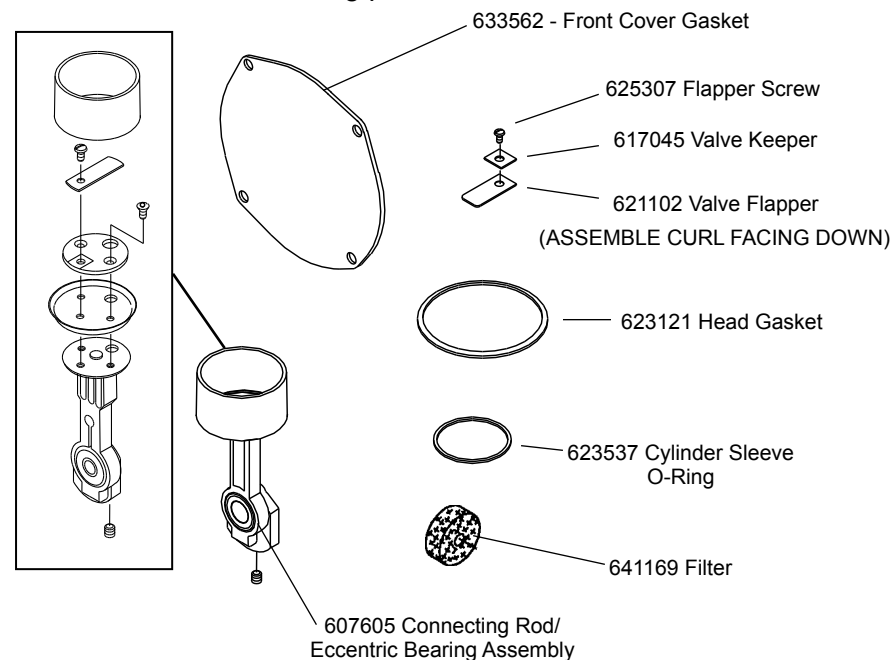
COMPRESSOR SERVICE KIT

For use on 405AASeries Model Compressors

⚠ WARNING: Unplug the compressor before beginning disassembly.

⚠ CAUTION: Improper assembly or use of damaged parts may lead to premature failure. To avoid frequent repairs follow the recommended assembly procedures.

This kit includes the following parts:



NOTE: Before you begin, read these instructions thoroughly and assemble the necessary tools. You will need:

- Torx T-25 attachment for torque wrench (for head screws).
- 5/16" allen wrench for for torque wrench (eccentric screw)
- Flat Screwdriver
- Clean Cloths

DISASSEMBLY

STEP 1. Clean loose dirt from the outside of the compressor.

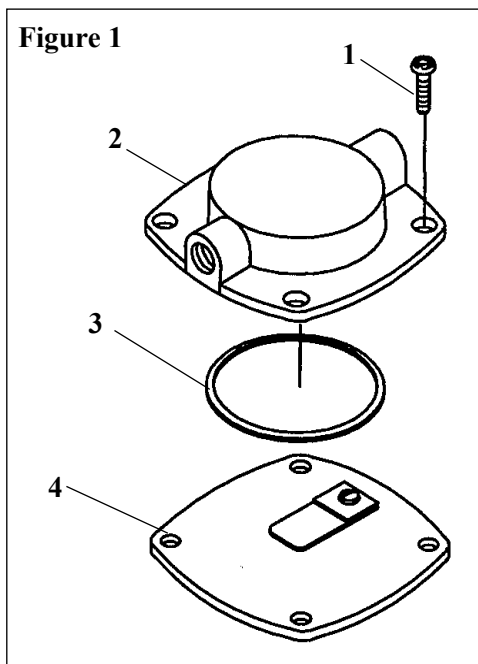
STEP 2. Loosen the 4 head screws (1) and remove the compressor head (2).

STEP 3. Carefully remove the valve plate (4) from the bottom of the head.

STEP 4. Remove the head gasket O-ring (3) and discard. Turn the valve plate over. Remove the cylinder sleeve O-ring and discard.

STEP 5. Remove the slotted screw on the top of the valve plate and discard. Remove the valve keeper and valve flapper and discard.

Figure 1



REASSEMBLY

STEP 9. Clean the top of the valve plate with a clean, soft cloth. Install the new exhaust valve flapper (curl facing down). The valve keeper should be placed on top of the flapper so that the word "UP" is visible.

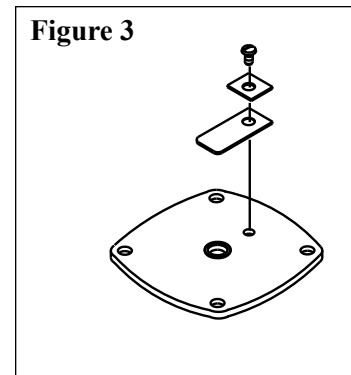
NOTE: Torque flapper screw to 18 inch-pounds.

STEP 10. Install the new head gasket, seating it firmly into the groove with your finger or blunt object. (See Fig. #3). Set aside.

STEP 11. Insert new rod assembly through top of housing (same as removal). Align set screw on eccentric bearing with the flat of the shaft (eccentric toward housing). Push assembly onto the shaft until the eccentric touches the housing.

STEP 12. Temporarily place the valve plate assembly on the compressor housing so the lip of the cylinder sleeve fits into the O-ring on the bottom of the valve plate assembly. Position the valve plate so the mounting holes line up with the threaded holes in the housing. Temporarily insert two head screws into the mounting holes to secure the valve plate assembly.

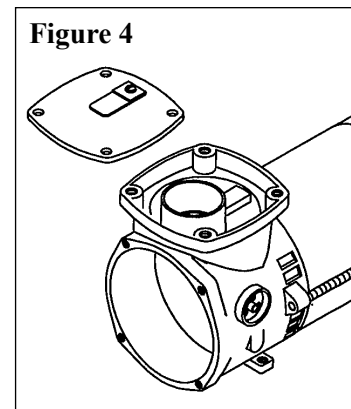
Figure 3



NOTE: The purpose of this procedure is to correctly position the connecting rod assembly on the motor shaft before tightening the set screw.

STEP 13. Use a torque wrench to tighten the eccentric set screw to 55 inch-pounds. Remove the valve plate assembly and head screws.

Figure 4



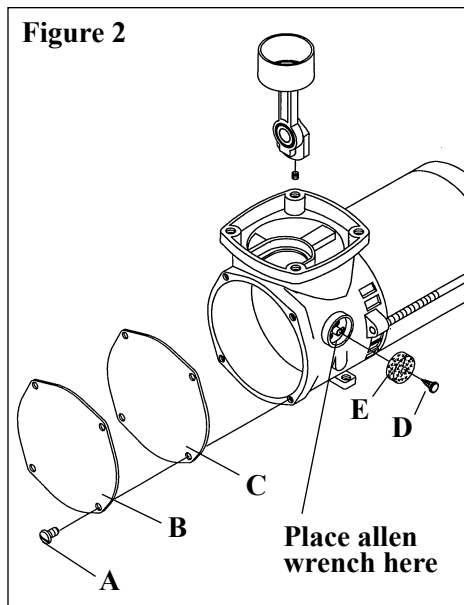
CHECK OPERATION: Hold the sleeve down against the housing with one hand, and slowly rotate the motor shaft with the other hand to ensure all components are lined up properly. As the piston travels up and down it will also rock from side to side. This is a feature of the WOB-L Piston. **If the piston rocks from the back to the front, re-align the eccentric bearing on the shaft.**

STEP 14. Place the head gasket into the groove located on the bottom on the head. Place head on flat surface upside down.

STEP 15. Place the valve plate on the bottom of the head with exhaust valve flapper down. Place o-ring into groove on bottom of valve plate.

STEP 16. Turn head and valve plate assembly right side up and place on top of housing locating the o-ring onto the top of the cylinder sleeve. Tighten the 4 head screws to 40 inch-pounds.

Figure 2



STEP 6. Remove the 4 screws (A) securing the front cover (Figure 2). Remove the front cover (B) and discard old front cover gasket (C).

STEP 7. Remove the plastic ratchet (D) securing the foam filter (E). Remove filter and discard. Set the ratchet aside for assembly later.

STEP 8. Rotate the eccentric bearing assembly so that the hex head of the set screw is facing the side of the housing you just removed the filter from. Place the 5/16" allen wrench in the vent hole and loosen the set screw and slide the Connecting Rod Assembly off of the shaft. Remove it through the top of the housing and discard.